

MAVERICK

MappedALI

[Features List](#)

MappedALI



[To Continue](#)
[Left Click or Press Any Key](#)

MAVERICK

MappedALI

SELECTED FEATURES

(Click a Feature to skip directly to it. Click Next or press any key to view all.)

[Searching](#)

[Routing](#)

[Aerial Photos](#)

[Wireless Caller Location Capability](#)

[Training & Administration](#)

[Features List](#)

MappedALI



[To Continue](#)
[Left Click or Press Any Key](#)



Address Search

Enter the address to find: City:

- SACRAMENTO ST
- SADDLEBACK DR
- SADOWA ST
- SAFIRA LN
- SAGAMORE ST
- SAINT CHARLES AV
- SAINT ELMO WY
- SAINT FRANCIS BL
- SAINT FRANCIS PL
- SAINT GEORGE AL
- SAINT GERMAIN AV
- SAINT JOSEPHS AV
- SAINT LOUIS AL

Example:
100 Main St

OK Cancel

SEARCH

By Address



Use the SmartType feature to input manual address searches. The list narrows with each letter typed to show all valid addresses.

Click OK to locate the requested address.

911 Status Map - [WyomingVer3]

File Calls Search Tools Routing View Window Help

SEARCH
By Landmark Name

Landmark Search

Enter the name of a landmark: City: Wyoming

Example: City College

- AFFENDOUSIS
- AFFORDABLE HEARING AID SERVICE
- AGONS RESTAURANT
- AID ASSOCIATION FOR LUTHERANS
- AIR COMPONENTS & ENGINEERING
- AIR ENGINEERING & CONDITIONING
- AIRTECH EQUIPMENT INC
- AIRWAY OXYGEN INC
- AJACS DIE SALES CORP
- AL & BOBS SPORTS INC
- ALAN ARMS
- ALAND CLUB SOUTH
- ALDELAND CORPORATION
- ALEXS TV & VCR REPAIR
- ALEXZANDRAS BRIDAL
- ALGER PLUMBING & HEATING
- ALGER SCHWINN
- ALIYA ANALYTICAL
- ALL AMERICAN CASH REGISTER INC**
- ALL AMERICAN LAW CENTER P C
- ALL PARTS INC
- ALL PHASE ELECTRIC SUPPLY CO
- ALL TEMP SERVICE INC
- ALLEN BRADLEY CO
- ALLEN MACHINE & MANUFACTURING
- ALLERGY ASSOCIATES OF W MICH
- ALLIED PHOTO LAB
- ALLIED TRUCK EQUIPMENT CO
- ALLSTAR SPORTSCARDS INC
- ALLSTATE INSURANCE/1700 28TH
- ALLSTATE INSURANCE/2000 28TH

OK Cancel

Sharon SW Avon SW Meyer SW Twenty-Eighth SW Oak V Thirtieth SW Taft SW Prairie Parkway SW Burlingame SW

For Help, press F1 Zoom: 1 mi NUM Saturday, 09/13/03 14:20

Searching for Intersections is just as easy. Enter the first street of your search and all intersections for that street appear in the second column. Choose the second street and Click OK.

The map will zoom to the selected point.

SEARCH By Intersection

MAPLE HILL AV / Old Musket Dr

Intersection Search

Find the intersection of:

MAPLE HILL AV	and	Old Musket Dr	City:
LUCAS CIR		Birch St	
LUCILLE ST		Cedar St	
LYDALL RD		Evergreen Rd	
LYONDALE RD		Hemlock St	
MAGNOLIA ST		Juniper St	
MAIN ST		Lantern Hl	
MALLARD LA		Liberty St	
MAPLE HILL AV		New Britain Av	
MARION		Old Farm Dr	
MARKET SQ		Old Musket Dr	
MARLBOROUGH ST		Pine St	
MARVIS ST		Ponderosa La	
MASELLI RD		Robbins Av	

Example:
Main St:
and
Jefferson Av

OK
Cancel

911 Status Map - [WyomingVer3]

File Calls Search Tools Routing View Window Help

SEARCH
By Phone Number

GRANTEX

Phone Number Search

Enter the phone number to find:

(616) 245 - 1911

OK
Cancel

If your data contains phone numbers, you request locations based on phone number query.

For Help, press F1

Zoom: 1 mi

CAP NUM

Saturday, 09/13/03 15:22

911 Status Map - [Newington.mav]

File Calls Search Tools Routing View Window Help

SEARCH

By X-Y Coordinate

Coordinate (X/Y) Search

Coordinate		Example:	
Longitude:	Latitude:	Decimal:	Deg/Min/Sec:
<input type="text" value="72.7191"/>	<input type="text" value="41.709944"/>	<input type="text" value="-84.452014"/>	<input type="text" value="84 4 45.1"/>
		Or	<input type="text" value="39.059808"/>
			<input type="text" value="39 0 14.4"/>

OK Cancel

Star: (-72.719100,41.709944)

The search by coordinate dialog allows the input of coordinates in almost any format.

For Help, press F1

Zoom: 0.999 mi

NUM Saturday, 09/13/03 13:30

ROUTING

Handy and (as always) Simple routing interface offers quick, customizable routing features using different routing criteria.

Select **ROUTING WIZARD** from the Routing Menu.

The Routing Wizard makes route requests easy.

Enter To and From by using address or intersection.

Then click **OK**.

For Help, press F1 Zoom: 3.013 mi NUM Saturday, 09/13/03 13:01

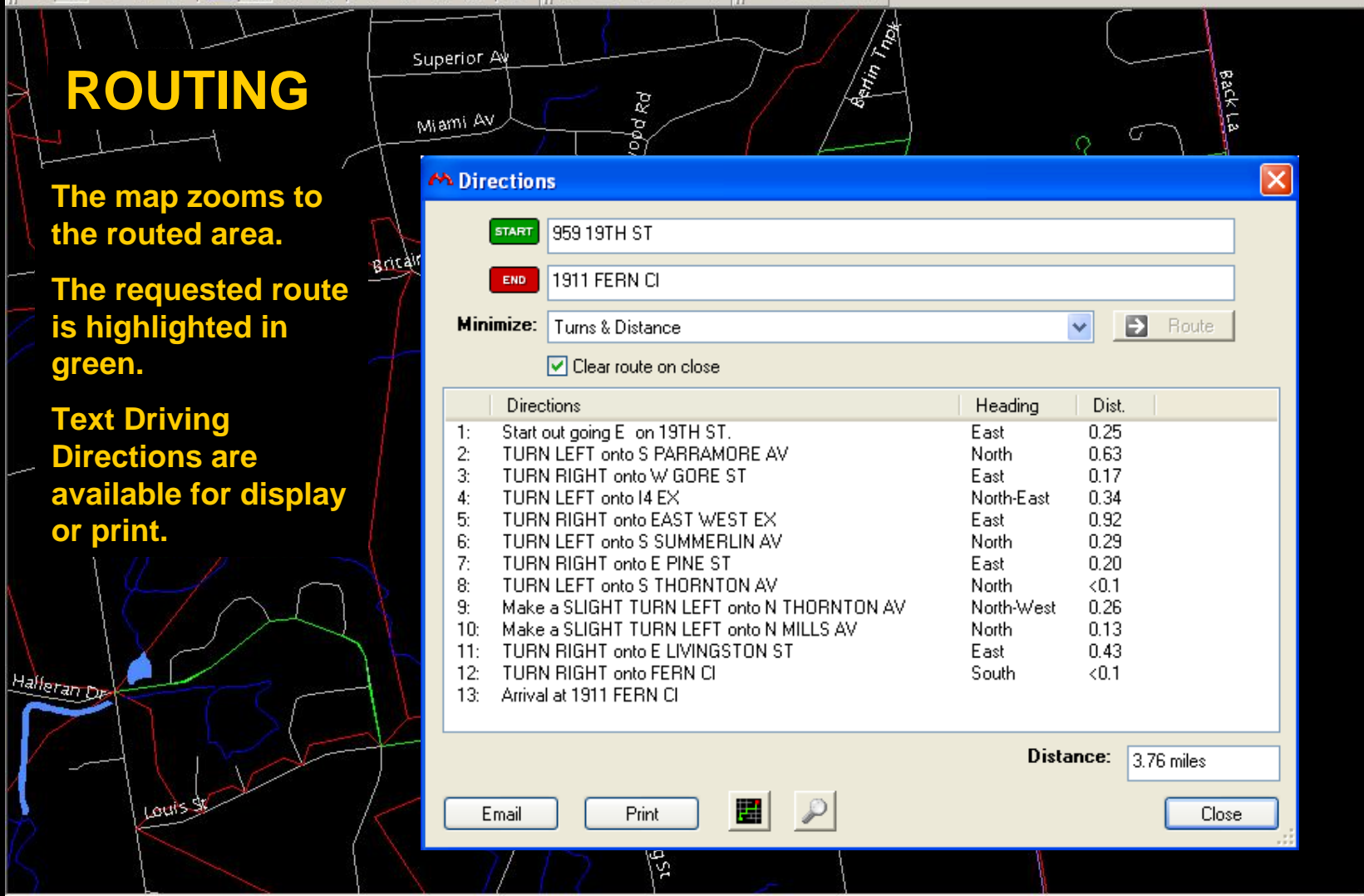


ROUTING

The map zooms to the routed area.

The requested route is highlighted in green.

Text Driving Directions are available for display or print.



Directions ✖

START 959 19TH ST

END 1911 FERN CI

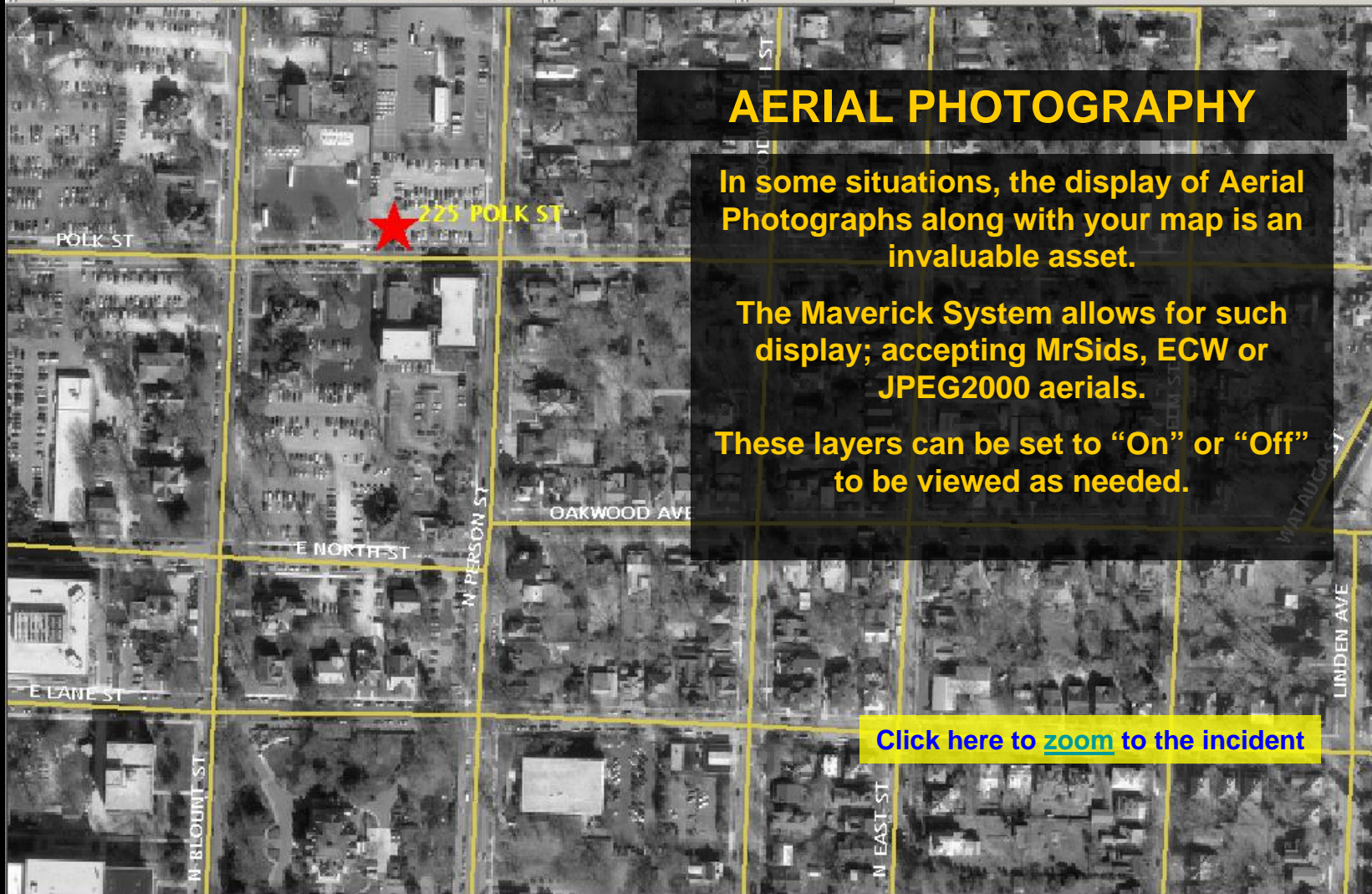
Minimize: Turns & Distance ➔ Route

Clear route on close

Directions	Heading	Dist.
1: Start out going E on 19TH ST.	East	0.25
2: TURN LEFT onto S PARRAMORE AV	North	0.63
3: TURN RIGHT onto W GORE ST	East	0.17
4: TURN LEFT onto I4 EX	North-East	0.34
5: TURN RIGHT onto EAST WEST EX	East	0.92
6: TURN LEFT onto S SUMMERLIN AV	North	0.29
7: TURN RIGHT onto E PINE ST	East	0.20
8: TURN LEFT onto S THORNTON AV	North	<0.1
9: Make a SLIGHT TURN LEFT onto N THORNTON AV	North-West	0.26
10: Make a SLIGHT TURN LEFT onto N MILLS AV	North	0.13
11: TURN RIGHT onto E LIVINGSTON ST	East	0.43
12: TURN RIGHT onto FERN CI	South	<0.1
13: Arrival at 1911 FERN CI		

Distance: 3.76 miles

Email Print Close



AERIAL PHOTOGRAPHY

In some situations, the display of Aerial Photographs along with your map is an invaluable asset.

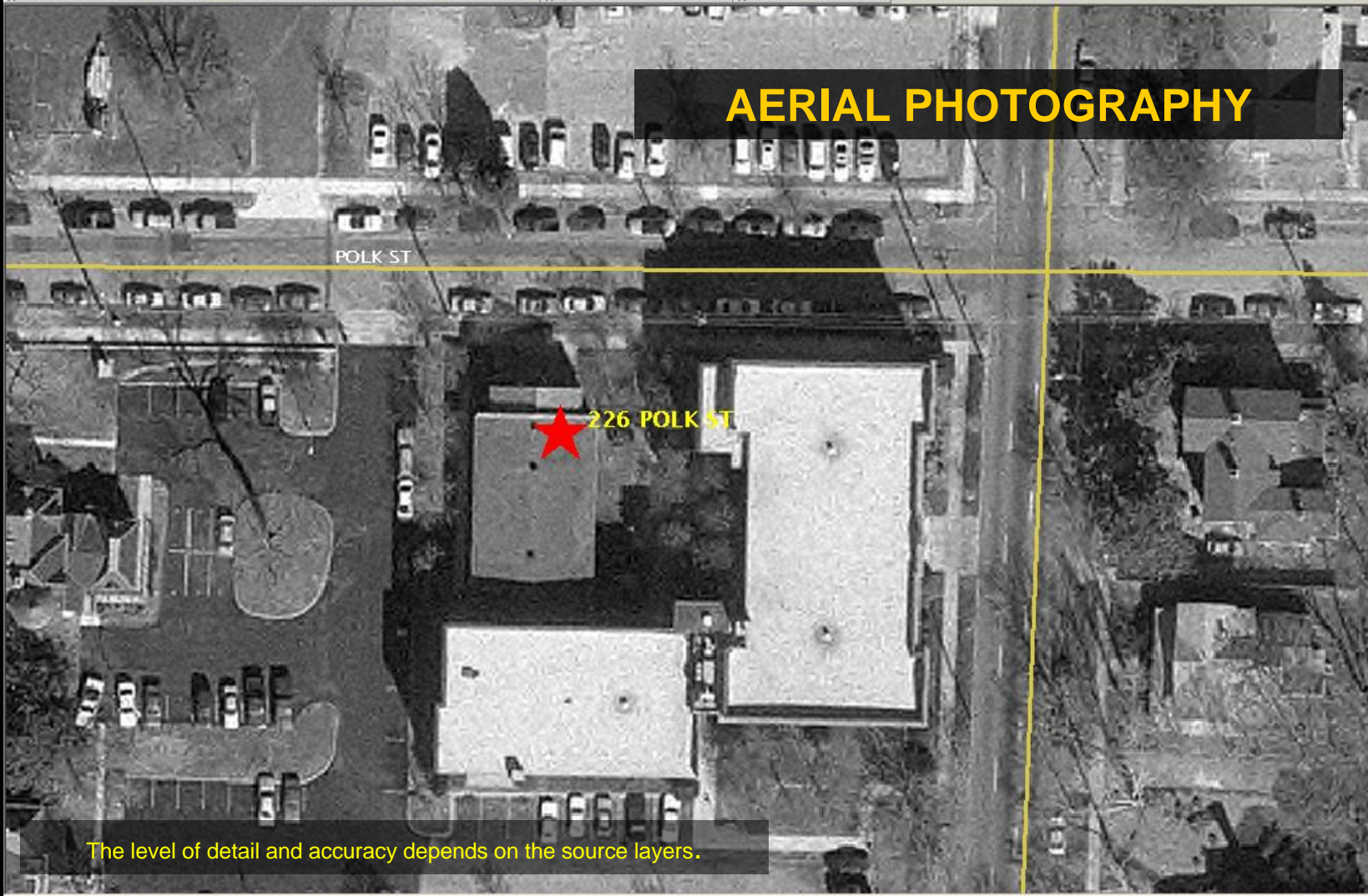
The Maverick System allows for such display; accepting MrSids, ECW or JPEG2000 aerials.

These layers can be set to "On" or "Off" to be viewed as needed.

[Click here to zoom to the incident](#)



AERIAL PHOTOGRAPHY



The level of detail and accuracy depends on the source layers.

Zoom In: Draw a box around the area to zoom to.

Zoom: 0.092 mi

(-78.635104, 35.786207)

NUM

Saturday, 09/13/03

17:42

Wireless Caller Location Capability

The MappedALI System can be integrated with virtually any call handling equipment to automatically process geo-referenced information received with these calls and provide you with an X-Y location along with the nearest valid address.

GPS enabled cell phones deliver geographical coordinates through the call handling process that are displayed on the map with a valid location (address or intersection).

CALL HANDLER INTEGRATION

The interface with your call handler equipment enables hands-free mapping functionality.

In addition, many operations can be performed on the mapping screen (zoom and pan the map, get info on points and/or streets, etc.)

MappedALI

MappedALI

Automatic Location Information:

1. Stand alone Mapping display application
2. Connects directly to a 911 Call handler Application
3. Handles 3-digit (similar to 911 in the USA) Emergency calls
4. Routing capability to user defined locations.
5. Handles Wireless and Landline calls
6. Spatial search capabilities for boundaries (city, county, municipal jurisdictions) and response areas

TRAINING

CALL TAKER

Maverick's familiar and intuitive mapping interface makes training a relatively simple matter.

A Call Taker training session for 10 trainees lasts approximately 4 hours with Q & A.

SYSTEM ADMINISTRATOR

One or two system administrators supervise the mapping system.

Administrative functions include:

- Setting up the System Map
- Importing new map layers
- Distributing updates throughout the network
- Setting permissions and passwords
- Maintaining contact with support personnel

Both programs have Online help and full time support.

Thank You for your interest in the Maverick Mapping System.

If you have questions or require additional information please contact your
911 Mapping representative.

That's All... for now
We look forward to working with you.

And thanks, again.



[Start Over](#)

Press ESC to end